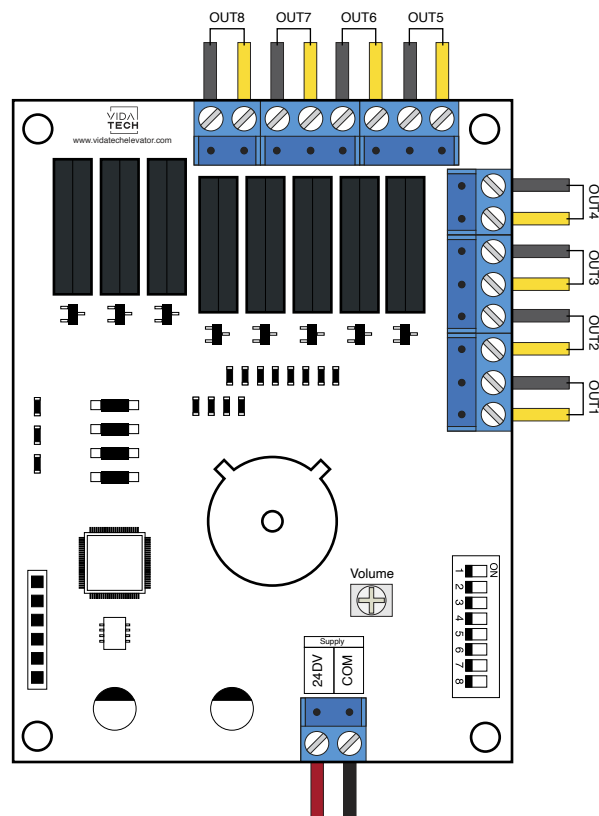


# K4500-8 - Security Keypad 8 outputs

## Installation manual



### Specification / Function

#### Audible Indicator

- 2 short beep indicate a successful operation.
- 3 short beeps indicate successful programming.
- 1 long beep indicate an operation error.
- 3 long beeps indicate that the system has been restored to default setting.
- 5 long beeps indicate that 5 unauthorized codes have been entered, the system will shut down for system protection.

#### Programming code

- The pre-set Programming Code is 0000. Please change it into a new one during first operation.
- Only one Programming Code for function setting.
- Programming Code is 4-10 digits in length.
- Programming Code can be changed anytime if needed.

Pre-sets user code	
Output #1 : 1 2 3 4	Output #5 : 5 6 7 8
Output #2 : 2 3 4 5	Output #6 : 6 7 8 9
Output #3 : 3 4 5 6	Output #7 : 7 8 9 0
Output #4 : 4 5 6 7	Output #8 : 8 9 0 1

#### User code

- Up to 4 sets of User Codes can be saved per output.
- User Code is only for output activation, without programming function.
- User Code is 4-10 digits in length.
- User Code can be deleted or added anytime if needed.

#### Output activation

When you enter a code to activate the output, it will take 2 seconds before the activation or it will be instant if you press the # button.

SW #	#	Text	Description							
S1	1	FAC	Restore pre-set factory code							
	2	MUTE	Toggle mute ON/OFF							
	Output Duration		1 second	2 second	3 second	4 second	5 second	6 second	7 second	0.5 second
	3	DUR1		●		●		●		●
	4	DUR2							●	●
	5	DUR3			●		●	●	●	●

#### Restore pre-set factory code

- You can restore Pre-set Factory Code by booting the keypad with dipswitch 1 active when you forget Programming Code or you want to cancel all previous setting.
- After restore, the Programming Code would be 0000 and user codes will also be reset.

#### Toggle mute ON/OFF

- You will hear beep sounds when pressing keypad, programming or operation errors. It can be turned off if needed by turning on and off the Dipswitch 2.
- As there will be no warning alarm, we suggest not to mute the beeper if it's not necessary.

#### Delete individual user code

- User Codes can be deleted individually. You can re-set the same number as code even if it's been deleted before.
- Programming Code is needed when deleting individual User Code.

#### Delete all user codes for an output

- All the User Codes can be deleted at the same time for an output. You can still reset the same numbers as codes even if they're deleted before.
- Programming Code is needed when deleting all User Codes.

### Code protection function

- The system will shut down if entering unauthorized codes over 5 times.
- The system will be operational again after 45 sec.

### Pass code and function set up

- Change default Programming Code and User Code before function set up.
- Each programming step should be done within 10 seconds.

Function programming	
<b>Add new User code</b>	
Enter PC > # > 2 beeps > 1 > 2 beeps > Enter new UC > # > 2 beeps > Enter ON > 3 beeps	
<b>Remark: Up to 4 sets of User Codes can be saved per output. User Code should be 4-10 digits in length.</b>	
<b>Delete an existing user code</b>	
Enter PC > # > 2 beeps > 2 > 2 beeps > Enter the UC you want to delete > # > 2 beeps > Enter ON > 3 beeps	
<b>Delete all user codes for an output</b>	
Enter PC > # > 2 beeps > 3 > 2 beeps > Enter ON > 3 beeps	
<b>Delete all user codes</b>	
Enter PC > # > 2 beeps > 4 > 2 beeps > # > 3 beeps	
<b>Change programming code</b>	
Enter PC > # > 2 beeps > 5 > 2 beeps > Enter new PC > # > 3 beeps	
<b>Unlock with programming code</b>	
Enter PC > # > 2 beeps > 6 > 2 beeps > Enter the output to unlock > 3 beeps	

\*Programming Code (PC) \*USER Code (UC) \* Output Number 1 to 8 (ON)